



MATERIALES INDUSTRIALES DEL SURESTE, S.A. DE C.V.  
 AV. HIDALGO 511, COL. LA LIBERTAD.  
 PUEBLA, PUE.

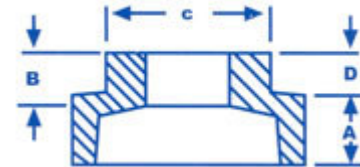
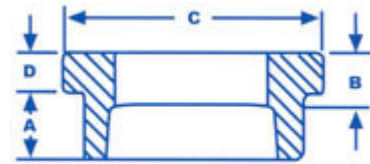
TEL 01 (222) 1 41 31 00

FAX 01 (222) 1 41 31 04

[ventasweb@materialesdelsureste.com](mailto:ventasweb@materialesdelsureste.com)

[www.materialesdelsureste.com](http://www.materialesdelsureste.com)

## Conexiones de Hierro Maleable Negro y Galvanizado



Reduccion Bushing Clase 150 Libras Negro y Galvanizado				
Medida	A	B	C	D
3/8" x 1/8"	0.480	0.250	0.680	0.160
3/8" x 1/4"	0.480	0.400	0.680	0.160
1/2" x 1/4"	0.560	0.320	0.870	1.900
1/2" x 3/8"	0.560	0.410	0.870	1.900
3/4" x 1/4"	0.630	0.320	1.150	0.220
3/4" x 3/8"	0.630	0.360	1.150	0.220
3/4" x 1/2"	0.630	0.530	1.150	0.220
1" x 1/4"	0.750	0.320	1.120	0.300
1" x 3/8"	0.750	0.360	1.120	0.300
1" x 1/2"	0.750	0.430	1.420	0.250
1" x 3/4"	0.750	0.500	1.420	0.250
1 1/4" x 1/2"	0.800	0.430	1.340	0.340
1 1/4" x 3/4"	0.800	0.500	1.760	0.280
1 1/4" x 1"	0.800	0.580	1.760	0.280
1 1/2" x 1/2"	0.830	0.430	1.340	0.370
1 1/2" x 3/4"	0.830	0.500	1.630	0.370
1 1/2" x 1"	0.830	0.580	0.200	0.310
1 1/2" x 1 1/4"	0.830	0.710	2.000	0.310
2" x 1/2"	0.880	0.430	1.340	0.410
2" x 3/4"	0.880	0.500	1.630	0.410
2" x 1"	0.880	0.580	1.950	0.410
2" x 1 1/4"	0.880	0.670	2.480	0.340
2" x 1 1/2"	0.880	0.700	2.480	0.340
2 1/2" x 1"	1.070	0.580	1.950	0.440
2 1/2" x 1 1/4"	1.070	0.670	2.390	0.440



**MATERIALES INDUSTRIALES DEL SURESTE, S.A. DE C.V.**  
**AV. HIDALGO 511, COL. LA LIBERTAD.**  
**PUEBLA, PUE.**

**TEL 01 (222) 1 41 31 00**

**FAX 01 (222) 1 41 31 04**

[ventasweb@materialesdelsureste.com](mailto:ventasweb@materialesdelsureste.com)

[www.materialesdelsureste.com](http://www.materialesdelsureste.com)

2 1/2" x 1 1/2"	1.070	0.700	2.680	0.440
2 1/2" x 2"	1.070	0.750	2.980	0.370
3" x 1"	1.130	0.580	1.950	0.480
3" x 1 1/4"	1.130	0.670	2.390	0.480
3" x 1 1/2"	1.130	0.700	2.680	0.480
3" x 2"	1.130	0.750	3.280	0.480
3" x 2 1/2"	1.130	0.920	3.860	0.400
4" x 1"	1.220	0.580	1.950	0.600
4" x 1 1/4"	1.220	0.670	2.390	0.600
4" x 1 1/2"	1.220	0.700	2.680	0.600
4" x 2"	1.220	0.750	3.280	0.600
4" x 2 1/2"	1.220	0.920	3.860	0.600
4" x 3"	1.220	0.980	4.620	0.500
6" x 2"	1.400	0.750	3.280	0.750
6" x 2 1/2"	1.400	0.920	3.860	0.750
6" x 3"	1.400	0.980	4.620	0.750
6" x 4"	1.400	1.080	5.790	0.750