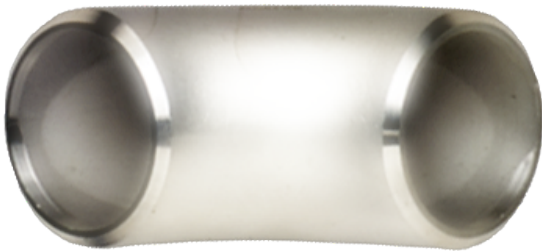


CODO 90°

CONEXIONES SOLDABLES

NORMAS DE FABRICACIÓN	NORMAS DE DIMENSIONAMIENTO	APLICACIÓN
ASTM A-403 ASTM A-774	ANSI B-16.5, B-16.28	Para usos generales con Pipe
*Aceros inoxidables: TP 304, 316, Grados L y Especiales		



CODOS 90° RADIO LARGO CÉDULA 10S

DIÁMETRO NOMINAL Nominal Pipe Size	DIÁMETRO EXTERNO Outside Diameter OD inch.(pulg.)	mm	DIÁMETRO INTERNO Inside Diameter ID	ESPESOR DE PARED Wall Thickness T inch.(pulg.)	mm	CENTRO A EXTREMO Center to End A	PESO APROX. Approx. Weight (Kgs.)
1/2	.840	21.34	0.674	0.083	2.11	1.500	0.06
3/4	1.050	26.67	0.884	0.083	2.11	1.125	0.06
1	1.315	33.40	1.097	0.109	2.77	1.500	0.16
1 1/4	1.660	42.16	1.442	0.109	2.77	1.875	0.20
1 1/2	1.900	48.26	1.682	0.109	2.77	2.250	0.28
2	2.375	60.33	2.157	0.109	2.77	3.000	0.47
2 1/2	2.875	73.03	2.635	0.120	3.05	3.750	0.79
3	3.500	88.90	3.260	0.120	3.05	4.500	1.16
4	4.500	114.30	4.260	0.120	3.05	6.000	2.00
6	6.625	168.28	6.357	0.134	3.40	9.000	4.96
8	8.625	219.08	8.329	0.148	3.76	12.000	9.55
10	10.750	273.05	10.420	0.165	4.19	15.000	16.60
12	12.750	323.85	12.390	0.180	4.57	18.000	25.80

CODOS 90° RADIO LARGO CÉDULA 40S

DIÁMETRO NOMINAL Nominal Pipe Size	DIÁMETRO EXTERNO Outside Diameter OD inch.(pulg.)	mm	DIÁMETRO INTERNO Inside Diameter ID	ESPESOR DE PARED Wall Thickness T inch.(pulg.)	mm	CENTRO A EXTREMO Center to End A	PESO APROX. Approx. Weight (Kgs.)
1/2	.840	21.34	0.622	0.109	2.77	1.500	0.08
3/4	1.050	26.67	0.824	0.113	2.87	1.125	0.10
1	1.315	33.40	1.049	0.133	3.38	1.500	0.15
1 1/4	1.660	42.16	1.380	0.140	3.56	1.875	0.25
1 1/2	1.900	48.26	1.610	0.145	3.68	2.250	0.36
2	2.375	60.33	2.067	0.154	3.91	3.000	0.65
2 1/2	2.875	73.03	2.469	0.203	5.16	3.750	1.29
3	3.500	88.90	3.068	0.216	5.49	4.500	2.02
4	4.500	114.30	4.026	0.237	6.02	6.000	3.84
6	6.625	168.28	6.065	0.280	7.11	9.000	10.10
8	8.625	219.08	7.981	0.322	8.18	12.000	20.30
10	10.750	273.05	10.020	0.365	9.27	15.000	36.00
12	12.750	323.85	12.000	0.375	9.53	18.000	53.00

